

ENTROPION

UNDERSTAND MORE ABOUT ENTROPION



Tomorrow's Eye Care, Today[®]



Singapore National
Eye Centre

SingHealth

Entropion

What is entropion?

Entropion is a condition in which your lower eyelid turns inward, rubbing against your eye. It is usually caused by a spasm or weakening of the muscles surrounding the eyelid.

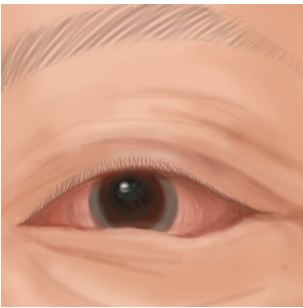


Illustration: Entropion

What are the causes of entropion?

Entropion occurs most commonly as a result of ageing. With age, the tendons and muscles that hold your eyelid taut against your eye stretches out and your eyelid starts to turn in. Occasionally, entropion is due to scarring of the inner surface of the eyelid, caused by inflammation, chronic infections or trauma.

These conditions usually distort the normal curve of the eyelid and cause your eyelid to turn in.

What are the symptoms?

The constant rubbing of the eyelashes against the cornea and conjunctiva can lead to the following symptoms:

- Excessive tearing
- Crusting of eyelid and mucous discharge
- Grittiness or sandy feeling
- Pain when exposed to bright light
- Blurring of vision

If you experience one or more of these symptoms, contact your ophthalmologist for a complete eye examination.

What are the complications of entropion?

Longstanding, uncorrected entropion can lead to gradual scarring of the cornea, as well as increase the risk of infection of the cornea. It is thus important to have this condition repaired before these complications permanently damage the eye.

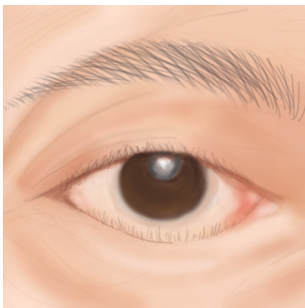


Illustration: Lower lid entropion
(lashes rubbing against the cornea)

If entropion is present in an eye requiring cataract removal, it is advisable to correct the lid abnormality first, before cataract surgery.

Entropion

How is entropion treated?

Surgery is usually required to tighten the lower eyelid and its attachments which will restore some of its elasticity and to reposition it. If you need to delay surgery, tape or sutures can be used to temporarily reposition the eyelid and protect the eye. However, these measures do not result in permanent cure.

Entropion causes irritation which in severe cases may lead to permanent blurring of vision. It should be treated by ophthalmic surgeons who are trained to manage this condition.

LOCATION MAP



Legend

MRT Station

Taxi Stand

East West Line

North East Line

Shuttle Bus Service
Mon to Fri (8.00am - 7.00pm)
Sat (8.00am - 2.00pm)

Opp Outram Park Stn
Bus No. 33, 63, 75, 121,
122, 174, 174e, 851, 970

Outram Park Stn Exit F
Bus No. 61, 124, 143, 147,
147e, 166, 197, 961, 961C

Outram Park Stn/Outram Rd
Bus No. 33, 63, 75, 121, 122, 174,
174e, 534, 535, 549, 761, 851, 970

This patient information leaflet is a general guide to help patients understand specific eye conditions, treatment or tests. The information does not replace the need for individual advice from an ophthalmologist. Please consult with your ophthalmologist about your specific eye condition and/or concerns.

The contents of this leaflet are not to be produced in any form without the prior permission of the Singapore National Eye Centre.

Information correct at date of print (March 2020)

Singapore National Eye Centre Company Registration No. 198900840W

Singapore National Eye Centre

11 Third Hospital Avenue, Singapore 168751

Appointments: (65) 6227 7266 Fax: (65) 6226 1884

Email: appointments@sneec.com.sg

Website: www.sneec.com.sg